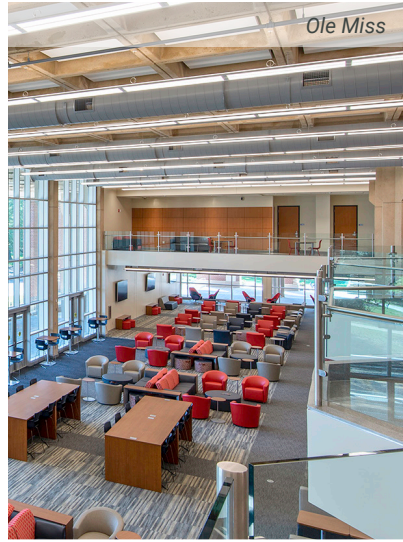


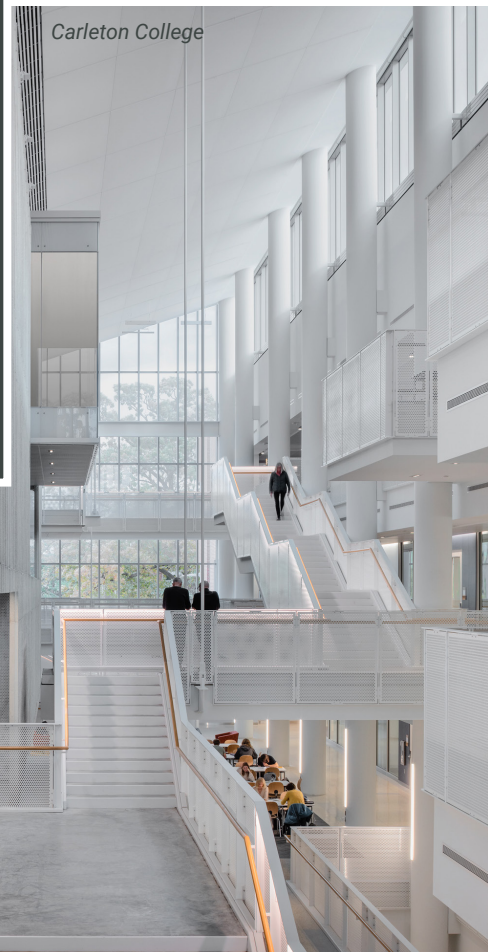
THE *Gephart*™ CURRENT



SUMMER 2021



Higher Education Team Receiving Top Marks





Greg Heinsch

Vice President & Principal

Letter From Leadership

School may be out for the summer, but our Higher Education Market team remains busy as institutions continue to invest in their students, staff, and facilities.

Our Midwest office recently hit a major milestone when we surpassed our 100th completed project at the University of Minnesota. From new construction, to large-scale renovations, to electrical upgrades, we have done it all and are exceptionally proud of the relationship and reputation we have built there over the last 15 years. In this newsletter, we're highlighting a recent project at the U of MN in which we renovated Pillsbury Hall, the second oldest building on campus. The Midwest office has also started to expand outside of the U of MN, working with private colleges outside the Twin Cities such as Carleton College and Gustavus Adolphus College. We

continue to look for opportunities to expand our portfolio. The Higher Education market in the Mid-South remains strong as well with most of our work happening at The University of Mississippi (Ole Miss) in Oxford, MS and The University of Memphis in Memphis, TN.

In addition to working on college campuses, we also take great pride in partnerships we have built. One that stands out is our relationship with the Herff College of Engineering - The University of Memphis. We participate in a variety of ways including career fairs, presentations, and hosting interns, giving them a successful start in the industry. Gephart is also a member of their Construction Management Advisory Council which is responsible for hiring the Professor of Practice for Construction of Engineering and Management (CEM) and establishing the Construction of Engineering and Management (CEM) program.

I would be remiss to not mention our support of my alma matter (and that of several others at Gephart, including my brother Larry), the University of Wisconsin - Madison. We often travel back there to give presentations to the Construction Club and recruit graduating seniors to join our team. On, Wisconsin!

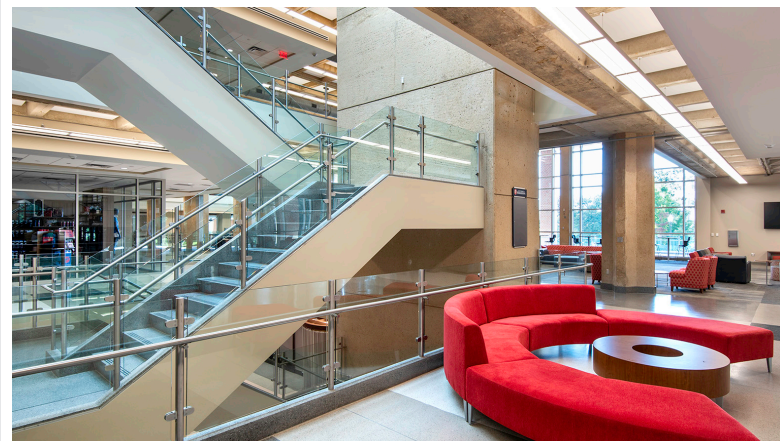
Ole Miss Student Union

Gephart was hired by Roy Anderson Corp for this complex, phased addition and renovation of the Student Union at Ole Miss.

Approximately 100,000 SF of the existing facility was renovated including improvements to the bookstore, credit union, coffee shop, lounge space, and administrative offices.

A 94,000 SF addition was built that included student-friendly amenities such as a food court, kitchens, transit hub, and ballroom.

The Student Union is the heart of this campus which made this project especially rewarding. We are proud of our work to provide a space that will bring students together and enhance their collegiate experience.



Carleton College New Science Building

Carleton College located in Northfield, MN made a significant investment in their campus in the building of the new Evelyn M. Anderson Hall Integrated Science Facility. This flexible space supports students and faculty with labs, classrooms, and shared workspaces. The building is the new home for the chemistry and geology departments as well as provides space for physics and faculty offices.

Gephart was hired by McGough Construction to serve as the electrical contractor for this state-of-the-art facility. In addition to the new construction, our scope also included the partial renovation of the adjacent Hulings and Olin Halls, and the addition of an energy station in the sub-basement.

Project highlights include:

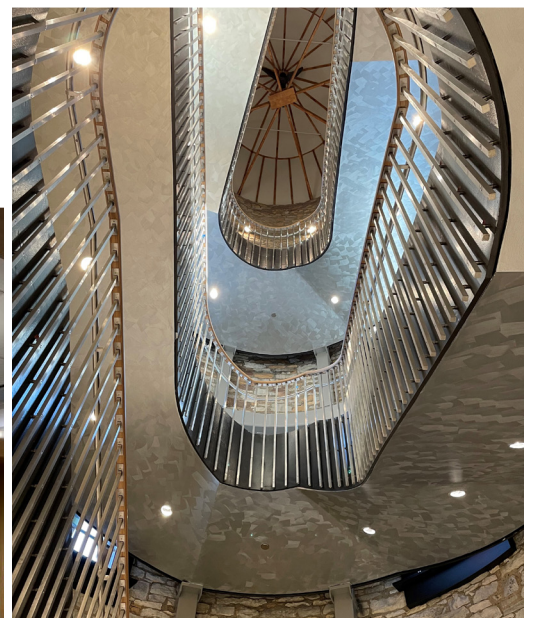
- Collaboration with Carleton science professors to provide unique and custom power requirements for 14 separate labs.
- Installation of more than 1,800 light fixtures, 4+ miles of lighting control wiring, 64+ miles of #12 and #10 CU wiring, and 20+ miles of ¾" EMT conduit.
- Two, separately derived 13.8 electrical services fed via an existing tunnel system.
- Utilization of prefabrication and just-in-time delivery to minimize disruption on campus and limited on-site storage.



University of Minnesota Pillsbury Hall Renovation

Building on our successful completion of the historic Minnesota State Capitol Restoration project with JE Dunn, we teamed up again with them to take on the renovation of Pillsbury Hall on the University of Minnesota Campus. Built in 1889, this second-oldest building on campus is home to the Department of English and located in the middle of the Old Campus Historic District.

The project entailed demolition and renovation of the interior while preserving historic features such as the stone walls and vaulted beams in the ceiling. Gephart's scope included installation of lighting, lighting controls, voice/data, MV transformer, new building electrical service, new power distribution system, and a communications service entrance duct bank. We also provided the rough-in for fire alarm, access control, CCTV and A/V.



Gephart is proudly celebrating 100+ completed projects at the U of MN!

Collegiate Sports Facilities

Higher education and sports facilities are major markets within Gephart and dating back to 2013 upon completing Pinnacle Bank Arena on the University of Nebraska campus, we have been able to leverage our experience in each industry. From locker room remodels, to a new track & field facility, to an indoor golf simulator, we are well positioned in this cross market. Recent highlights include:



Gustavus Adolphus College Lund Center Expansion

Gustavus Adolphus College in St. Peter, MN is expanding and renovating their athletic and wellness facility located in the heart of the campus.

Hired by Kraus-Anderson, we are currently on campus working on Phase I which includes an addition between the hockey rink and basketball court, as well as new locker rooms, offices, and training rooms. The team is also providing infrastructure upgrades to the facility to prepare for Phase II of construction which includes a new field house.

This is our first time working on the Gustavus campus and we are eager to build a relationship with the College and expand our Higher Education portfolio.

University of Memphis Indoor Practice Facility

Gephart was hired by longtime, Mid-South client Turner Construction for this two-phase project on the University of Memphis campus.

Phase I included the renovation and expansion of the Billy J. Murphy Athletic Complex which is the home to the Memphis Tigers football team. The project included a 2-story addition as well as renovation to offices, lounges and common areas, training rooms, and locker rooms.

Phase II saw the construction of an 88,000 SF practice facility with a turf field and state-of-the-art sports lighting that included 104 Ephesus AirMesh, color-changing fixtures to create a dynamic light show. The Gephart team also installed a new 50KW generator.

